

The Faroe Survey Area for Multibeam acquisition 2007.

The survey area for acquisition of Multibeam data 2007 is shown in figure 1. The area is regarded as a minimum area for acquisition. Further areas for data acquisition are optional, and it will be decided when final contract will be signed.

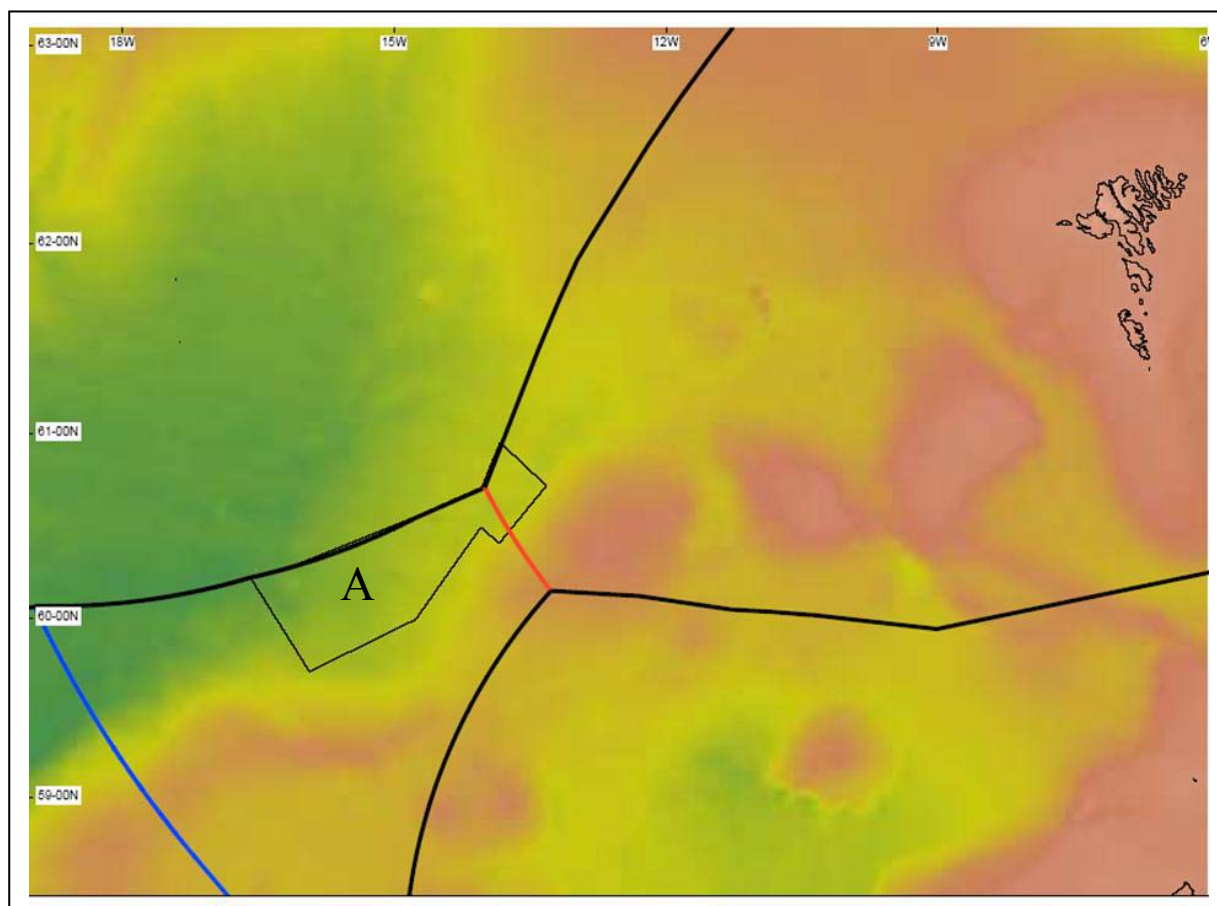


Figure 1: Bathymetry from ETOPO2. Area A. The Red line is 200NM from The Faroe Island, The Blue is 350 NM. Thick black lines are Borders or 200 NM from other countries. The Thin black line delimitate the acquisition area.

Bounding coordinates for the survey areas (in decimal degrees, WGS84)

N	W
60.2216	-16.5854
59.7056	-15.9344
59.9932	-14.7644
60.4962	-14.0430
60.4092	-13.8407
60.7210	-13.3217
60.9529	-13.8319
60.7124	-14.0342
60.5482	-14.7908
60.2872	-16.1103